



Molenaar Edition

Le Chant de L'Arbre

Serge Lancen

Art.Nr: 011536100

Difficulty: D

Duration: 12:19

Concert Band

Original Pieces

Colofon

Molenaar Edition BV

Industrieweg 23
NL 1521 ND Wormerveer
the Netherlands
Phone: +31 (0)75 - 628 68 59
Fax: +31 (0)75 - 621 49 91
Email: office@molenaar.com
Website: www.molenaar.com

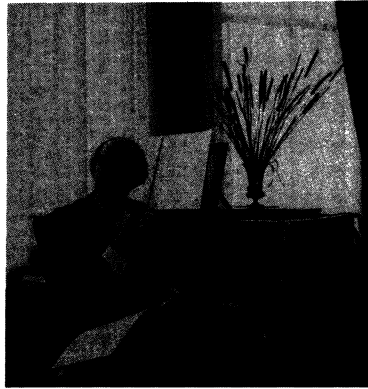
© Molenaar Edition BV - Wormerveer - the Netherlands

Copying of sheetmusic from this booklet is illegal.

Mini - Score

www.molenaar.com

Molenaar Edition



SERGE LANCEN werd in 1922 te Parijs geboren. Zijn leven staat in het teken van de muziek. Zijn eerste werk schreef hij al op vierjarige leeftijd. Hij studeerde aan het Parijse Conservatorium bij Tony Aubin, schreef in 1949 Etudes die bekroond werden en ontving enige tijd later de „Prix de Rome“. Zijn oeuvre als componist is zeer gevarieerd en bevat o.a. een aantal soloconcerten (voor fluit, contrabas en piano), een Sinfonietta en een groot aantal werken in het lichte symphonische genre (veel opdrachten van de Franse radio), kamermusiek, filmmusiek en de laatste tien jaar verschillende werken voor harmonieorkest, zoals de „Manhattan Symphonie“, „Festival in Kerkrade“, „Symphonie de Paris“, „Le Chant de l'Arbre“, „Le Mont St. Michel“ en het „Parade Concerto“ voor piano en harmonieorkest, werken waarin de componist op ruime wijze gebruik maakt van het veelkleurige palet dat het harmonieorkest biedt.

SERGE LANCEN was born in Paris in 1922. The whole of his life has been dominated by music. He wrote his first work at the age of four. He studied with Tony Aubin at the Paris Conservatoire. In 1949 he won a prize for his Etudes, and some time later he was awarded the „Prix de Rome“. His work as composer is very varied and includes a number of solo concert (for flute, double bass and piano), a Sinfonietta and a large number of works in the light symphonic genre (many of these commissioned by the French radio), chamber music, film music, and during the last ten years various works for wind band, such as the „Manhattan Symphony“, „Festival in Kerkrade“, „Symphonie de Paris“, „Le Chant de l'Arbre“, „Le Mont St. Michel“ and the „Parade Concerto“ for piano and wind band.

SERGE LANCEN naquit à Paris en 1922. Toute sa vie se place sous le signe de la musique: c'est dès l'âge de 4 ans qu'il écrit sa première oeuvre. Il étudia au Conservatoire de Paris sous la direction de Tony Aubin, composa en 1949 des Etudes qui lui valurent un prix, et fut peu de temps après lauréat du „Prix de Rome“. Son oeuvre de compositeur, d'une grande variété, comprend notamment une série de concertos pour divers instruments solistes (flûte, contrebasse et piano), une Sinfonietta et un grand nombre d'oeuvres symphoniques légères (commandées par la radio française), de la musique de chambre, des musiques de film et, au cours des 10 dernières années, différentes oeuvres pour orchestre harmonique, telles que la „Manhattan Symphonie“, „Festival à Kerkrade“, la „Symphonie de Paris“, „Le Chant de l'Arbre“, „Le Mont St-Michel“ et le „Parade Concerto“ pour piano et orchestre harmonique, dans lesquelles le compositeur puise généreusement à la palette bigarrée qu'offre l'orchestre d'harmonie.

SERGE LANCEN wurde 1922 in Paris geboren. Sein Leben steht im Zeichen der Musik. Sein erstes Werk schrieb er bereits im Alter von vier Jahren. Er studierte am Pariser Konservatorium bei Tony Aubin, schrieb 1949 berühmte gewordene Etüden und wurde einige Zeit später der „Prix de Rome“ ausgezeichnet. Sein Œuvre als Komponist ist sehr vielseitig und umfasst eine Reihe von Solokonzerten (für Flöte, Kontrabaß und Piano), eine Sinfonietta und eine große Anzahl von Werken im leichten symphonischen Genre (viele Aufträge der französischen Radio), Kammermusik, Filmmusik und, in den letzten zehn Jahren, verschiedene Werke für Harmonieorchester, wie die „Manhattan Symphonie“, „Festival in Kerkrade“, die „Symphonie de Paris“, „Le Chant de l'Arbre“, „Le Mont St. Michel“ und das „Parade Concerto“ für Klavier und Harmonieorchester, in denen der Komponist großzügig die bunte Palette des Harmonieorchesters nutzt.

LE CHANT DE L'ARBRE

A mon ami Roger Thirault

duration = 213 minutes pour grand orchestre d'harmonie (or band)

Commande de l'état

- Le Chant de l'Arbre, poème symphonique, chante la vie de l'Arbre à travers les saisons.
- C'est l'Été. Eclatant de lumière, ik respandit; secoué parfois par de violents orages.
- Avec l'arrivée de l'Automne, son feuillage se dore, se détache voltige et vient joncher le sol.
- Le sommeil hivernal l'envahit.
- Mais voici le Printemps. Tout renaît; et l'Arbre à nouveau s'épanouit.

INSTRUMENTATION "LE CHANT DE L'ARBRE" - 01.1536.10

HARMONIE / CONCERT BAND / SYMPHONIC BAND

1 Full Score	2 Horn I	} Eb/F
1 Piccolo C	1 Horn II	
8 Flute I + II	1 Horn III	
2 Oboe I + II	1 Tenorhorn I	} Eb
1 Cor Anglais	1 Tenorhorn II	
2 Bassoon I + II	2 Trombone I C	
2 Solo Clarinet I + II	2 Trombone II C	} Bb
4 Clarinet I A	2 Trombone III C	
4 Clarinet I B	2 Barit. Euph. C	
4 Clarinet II	2 Barit. Euph. Bb	} Eb
4 Clarinet III	1 Stringbass C	
1 Alto Clarinet	4 Basses (Tuba) C I + II	
1 Bass Clarinet	1 Triangel	} Percussion
1 Alto Saxophone I	3 Percussion	
1 Alto Saxophone II	(Cymb., Xylophone, Glockenspiel, Triangel)	
2 Tenor Saxophone I + II		
1 Baritone Saxophone		
1 Bass Saxophone		
1 Flügelhorn I		
1 Flügelhorn II		
2 Cornet I		
2 Cornet II		
2 Trumpet I		
2 Trumpet II		
2 Trumpet III		

x = N.O. = Non obligé, not obliged

Niets van deze uitgave mag worden verspreid of openbaar door middel van druk, fotocoopy, microfilm of welke andere wijze ook, voorziedende toestemming van de uitgever.

No part of this book may be produced in any form of print, photograph, film or any other means without written permission of the publisher.

01.1586.10

01.1586.10

01.1586.10

01.1586.10

Fl. rit. cresc. poco

Oboe rit. cresc. poco

Clarinet rit. cresc. poco

Bassoon rit. cresc. poco

Horn rit. cresc. poco

Trumpet rit. cresc. poco

Trombone rit. cresc. poco

Perc. rit. cresc. poco

01.1536.10

Fl. rit. cresc. poco

Oboe rit. cresc. poco

Clarinet rit. cresc. poco

Bassoon rit. cresc. poco

Horn rit. cresc. poco

Trumpet rit. cresc. poco

Trombone rit. cresc. poco

Perc. rit. cresc. poco

01.1536.10

Fl. poco rit. Allegretto J=66 dim.

Oboe poco rit. Allegretto J=66 dim.

Clarinet poco rit. Allegretto J=66 dim.

Bassoon poco rit. Allegretto J=66 dim.

Horn poco rit. Allegretto J=66 dim.

Trumpet poco rit. Allegretto J=66 dim.

Trombone poco rit. Allegretto J=66 dim.

Perc. poco rit. Allegretto J=66 dim.

01.1536.10

Fl. poco rit. Allegretto J=66 dim.

Oboe poco rit. Allegretto J=66 dim.

Clarinet poco rit. Allegretto J=66 dim.

Bassoon poco rit. Allegretto J=66 dim.

Horn poco rit. Allegretto J=66 dim.

Trumpet poco rit. Allegretto J=66 dim.

Trombone poco rit. Allegretto J=66 dim.

Perc. poco rit. Allegretto J=66 dim.

01.1536.10

Flc.
Fl.
Ob.
Cl.
Fg.
Bbpt+Cl.
BbCl.Sol.
BbCl. 1.
BbCl. 2.
BbCl. 3.
BbCl. Alt.
BbCl. Bar.
Bb Sax. Alt.
Bb Sax. Ten.
Bb Sax. Bar.
Bb Sax. Bar.
Horn F.
Horn T.
Trb. 1.
Trb. 2.
Trb. 3.
Bb Cor.
Bb Bugl. 1.
Bb Bugl. 2.
Bb Bar.
Euph. C.
Bass C.
Cb. Cordn.
Timp.
Perc.

Mini Score

Flc.
Fl.
Ob.
Cl.
Fg.
Bbpt+Cl.
BbCl.Sol.
BbCl. 1.
BbCl. 2.
BbCl. 3.
BbCl. Alt.
BbCl. Bar.
Bb Sax. Alt.
Bb Sax. Ten.
Bb Sax. Bar.
Bb Sax. Bar.
Horn F.
Horn T.
Bb Trp. 1.
Bb Trp. 2.
Bb Trp. 3.
Trb. 1.
Trb. 2.
Trb. 3.
Bb Cor.
Bb Bugl. 1.
Bb Bugl. 2.
Bb Bar.
Euph. C.
Bass C.
Cb. Cordn.
Timp.
Perc.

Mini Score

Flc.
Fl.
Ob.
Cl.
Fg.
Bbpt+Cl.
BbCl.Sol.
BbCl. 1.
BbCl. 2.
BbCl. 3.
BbCl. Alt.
BbCl. Bar.
Bb Sax. Alt.
Bb Sax. Ten.
Bb Sax. Bar.
Bb Sax. Bar.
Horn F.
Horn T.
Trb. 1.
Trb. 2.
Trb. 3.
Bb Cor.
Bb Bugl. 1.
Bb Bugl. 2.
Bb Bar.
Euph. C.
Bass C.
Cb. Cordn.
Timp.
Perc.

Mini Score

Flc.
Fl.
Ob.
Cl.
Fg.
Bbpt+Cl.
BbCl.Sol.
BbCl. 1.
BbCl. 2.
BbCl. 3.
BbCl. Alt.
Cl. Bar.
Bb Sax. Alt.
Bb Sax. Ten.
Bb Sax. Bar.
Bb Sax. Bar.
Horn F.
Horn T.
Bb Trp. 1.
Bb Trp. 2.
Bb Trp. 3.
Trb. 1.
Trb. 2.
Trb. 3.
Bb Cor.
Bb Bugl. 1.
Bb Bugl. 2.
Bb Bar.
Euph. C.
Bass C.
Cb. Cordn.
Timp.
Perc.

Mini Score

ritenuto

01.1586.10

Lento $\text{♩} = 36$

01.1586.10

01.1586.10

10 accel. poco a poco al...

01.1586.10

Allegro (♩ = 80)

01.1556.10

01.1556.10

01.1556.10

01.1556.10

Flc.
Fl.
Ob.
Cl.
Fg.
BspnCl.
BspnCl. Sol.
BspnCl. 1
BspnCl. 2
BspnCl. 3
BspnCl. Alt.
Bspn. Alt. 1
Bspn. Alt. 2
Bspn. Ten.
Bspn. Bar.
Bspn. Bar.
Horn F.
Horn F.
Horn F.
Horn Tpt.
Horn Tpt.
Horn Tpt.
Tbn.
Tbn.
Tbn.
Bb Cor.
Bb Cor.
Bb Bar.
Bb Bar.
Bspn. C.
Bspn. C.
Cb. Corde.
Cb. Corde.
Timp.
Timp.
Perc.
Perc.

01.1586.10

Flc.
Fl.
Ob.
Cl.
Fg.
BspnCl.
BspnCl. Sol.
BspnCl. 1
BspnCl. 2
BspnCl. 3
BspnCl. Alt.
Bspn. Alt. 1
Bspn. Alt. 2
Bspn. Ten.
Bspn. Bar.
Bspn. Bar.
Horn F.
Horn F.
Horn F.
Horn Tpt.
Horn Tpt.
Horn Tpt.
Tbn.
Tbn.
Tbn.
Bb Cor.
Bb Cor.
Bb Bar.
Bb Bar.
Bspn. C.
Bspn. C.
Cb. Corde.
Cb. Corde.
Timp.
Timp.
Perc.
Perc.

01.1586.10

Flc.
Fl.
Ob.
Cl.
Fg.
BspnCl.
BspnCl. Sol.
BspnCl. 1
BspnCl. 2
BspnCl. 3
BspnCl. Alt.
Bspn. Alt. 1
Bspn. Alt. 2
Bspn. Ten.
Bspn. Bar.
Bspn. Bar.
Horn F.
Horn F.
Horn F.
Horn Tpt.
Horn Tpt.
Horn Tpt.
Tbn.
Tbn.
Tbn.
Bb Cor.
Bb Cor.
Bb Bar.
Bb Bar.
Bspn. C.
Bspn. C.
Cb. Corde.
Cb. Corde.
Timp.
Timp.
Perc.
Perc.

01.1586.10

Flc.
Fl.
Ob.
Cl.
Fg.
BspnCl.
BspnCl. Sol.
BspnCl. 1
BspnCl. 2
BspnCl. 3
BspnCl. Alt.
Bspn. Alt. 1
Bspn. Alt. 2
Bspn. Ten.
Bspn. Bar.
Bspn. Bar.
Horn F.
Horn F.
Horn F.
Horn Tpt.
Horn Tpt.
Horn Tpt.
Tbn.
Tbn.
Tbn.
Bb Cor.
Bb Cor.
Bb Bar.
Bb Bar.
Bspn. C.
Bspn. C.
Cb. Corde.
Cb. Corde.
Timp.
Timp.
Perc.
Perc.

01.1586.10

01.1586.10

Mini Score

01.1586.10

Mini Score

01.1586.10

Mini Score

01.1586.10

Mini Score

01.1536.10

01.1536.10

01.1536.10

01.1536.10

Musical score for page 38, featuring various instruments including Piccolo, Flute, Oboe, Clarinet, Bassoon, Saxophone, Trumpet, Trombone, Horn, Percussion, and strings. The score includes dynamic markings such as *mf*, *dim*, and *pp*.

Musical score for page 39, featuring various instruments including Piccolo, Flute, Oboe, Clarinet, Bassoon, Saxophone, Trumpet, Trombone, Horn, Percussion, and strings. The score includes dynamic markings such as *mf*, *molto*, and *Lento J=40*.

Musical score for page 40, featuring various instruments including Piccolo, Flute, Oboe, Clarinet, Bassoon, Saxophone, Trumpet, Trombone, Horn, Percussion, and strings. The score includes dynamic markings such as *mf*, *dim*, and *pp*.

Musical score for page 41, featuring various instruments including Piccolo, Flute, Oboe, Clarinet, Bassoon, Saxophone, Trumpet, Trombone, Horn, Percussion, and strings. The score includes dynamic markings such as *mf*, *pp*, and *Allargato (J=66)*.

Musical score for page 42, featuring various instruments including Piccolo, Flute, Oboe, Clarinet, Bassoon, Saxophone, Trumpet, Trombone, Percussion, and strings. A large 'Mini Score' watermark is overlaid on the page.

Musical score for page 43, featuring various instruments including Piccolo, Flute, Oboe, Clarinet, Bassoon, Saxophone, Trumpet, Trombone, Percussion, and strings. A large 'Mini Score' watermark is overlaid on the page.

Musical score for page 44, featuring various instruments including Piccolo, Flute, Oboe, Clarinet, Bassoon, Saxophone, Trumpet, Trombone, Percussion, and strings. A large 'Mini Score' watermark is overlaid on the page.

Musical score for page 45, featuring various instruments including Piccolo, Flute, Oboe, Clarinet, Bassoon, Saxophone, Trumpet, Trombone, Percussion, and strings. A large 'Mini Score' watermark is overlaid on the page.

Musical score for page 46, featuring various instruments including Piccolo, Flute, Oboe, Clarinet, Bassoon, Saxophones, Horns, Trumpets, Trombones, Percussion, and Strings. The score includes dynamic markings such as *dim.*, *mf*, and *ff*, and performance instructions like *1.2.* and *1.3.* A large watermark reading "Mini Score" is overlaid on the page.

Musical score for page 47, featuring various instruments including Piccolo, Flute, Oboe, Clarinet, Bassoon, Saxophones, Horns, Trumpets, Trombones, Percussion, and Strings. The score includes dynamic markings such as *mf* and *ff*, and performance instructions like *1.2.* and *1.3.* A large watermark reading "Mini Score" is overlaid on the page.

Musical score for page 48, featuring various instruments including Piccolo, Flute, Oboe, Clarinet, Bassoon, Saxophones, Horns, Trumpets, Trombones, Percussion, and Strings. The score includes dynamic markings such as *dim.*, *mf*, and *ff*, and performance instructions like *1.2.* and *1.3.* A large watermark reading "Mini Score" is overlaid on the page.

Musical score for page 49, featuring various instruments including Piccolo, Flute, Oboe, Clarinet, Bassoon, Saxophones, Horns, Trumpets, Trombones, Percussion, and Strings. The score includes dynamic markings such as *mf* and *ff*, and performance instructions like *1.2.* and *1.3.* A large watermark reading "Mini Score" is overlaid on the page.

01.1556.10

01.1556.10

01.1556.10

01.1556.10

01.1586.10

Mini Score

01.1586.10

Mini Score

01.1586.10

Mini Score

01.1586.10

Mini Score

Fl.
Fl.
Ob.
Cl.
Fg.
BbptCl.
BbCl.Sol.
BbCl. 1
BbCl. 2
BbCl. 3
BbCl.Alt.
BbCl.Bar.
Bb Sax. Alt.
Bb Sax. Ten.
Bb Sax. Bar.
Bb Sax. Bar.
Horn F.
Horn F.
Horn F.
Bb Trp.
Tbn.
Tbn.
Bb Cor.
Bb Cor.
Bb Bar.
Bb Bar.
Bass C.
Bass C.
Ch. Corde.
Tmb.
Perc.

01.1886.10

Fl.
Fl.
Ob.
Cl.
Fg.
BbptCl.
BbCl.Sol.
BbCl. 1
BbCl. 2
BbCl. 3
BbCl.Alt.
BbCl.Bar.
Bb Sax. Alt.
Bb Sax. Ten.
Bb Sax. Bar.
Bb Sax. Bar.
Horn F.
Horn F.
Horn F.
Bb Trp.
Tbn.
Tbn.
Bb Cor.
Bb Cor.
Bb Bar.
Bb Bar.
Bass C.
Bass C.
Ch. Corde.
Tmb.
Perc.

01.1886.10

Fl.
Fl.
Ob.
Cl.
Fg.
BbptCl.
BbCl.Sol.
BbCl. 1
BbCl. 2
BbCl. 3
BbCl.Alt.
BbCl.Bar.
Bb Sax. Alt.
Bb Sax. Ten.
Bb Sax. Bar.
Bb Sax. Bar.
Horn F.
Horn F.
Horn F.
Bb Trp.
Tbn.
Tbn.
Bb Cor.
Bb Cor.
Bb Bar.
Bb Bar.
Bass C.
Bass C.
Ch. Corde.
Tmb.
Perc.

01.1886.10

Fl.
Fl.
Ob.
Cl.
Fg.
BbptCl.
BbCl.Sol.
BbCl. 1
BbCl. 2
BbCl. 3
BbCl.Alt.
BbCl.Bar.
Bb Sax. Alt.
Bb Sax. Ten.
Bb Sax. Bar.
Bb Sax. Bar.
Horn F.
Horn F.
Horn F.
Bb Trp.
Tbn.
Tbn.
Bb Cor.
Bb Cor.
Bb Bar.
Bb Bar.
Bass C.
Bass C.
Ch. Corde.
Tmb.
Perc.

01.1886.10

① Andante $\text{♩} = 44$

Fl. p mf f pp ppp

Ob. pp ppp

Cu. pp ppp

Fg. pp ppp

B♭ptCl. pp ppp

B♭Cl. Solo pp ppp

B♭Cl. 1 pp ppp

B♭Cl. 2 pp ppp

B♭Cl. 3 pp ppp

B♭Cl. Alt. pp ppp

B♭Cl. Bar. pp ppp

Ed. Bar. Alt. 1 pp ppp

Ed. Bar. Alt. 2 pp ppp

Ed. Bar. Ten. pp ppp

Ed. Bar. Bar. pp ppp

Ed. Bar. Bar. pp ppp

Horn F. pp ppp

B♭Tpt. 1 pp ppp

B♭Tpt. 2 pp ppp

Tbn. 1 pp ppp

Tbn. 2 pp ppp

B♭Cor. pp ppp

B♭Bass. 1 pp ppp

B♭Bass. 2 pp ppp

Euph. C. pp ppp

Bass C. pp ppp

Ch. Contra. pp ppp

Timb. pp ppp

Perc. pp ppp

② Andante $\text{♩} = 44$

③ Andante $\text{♩} = 44$

01.1536.10

Fl. pp ppp

Ob. pp ppp

Cu. pp ppp

Fg. pp ppp

B♭ptCl. pp ppp

B♭Cl. Solo pp ppp

B♭Cl. 1 pp ppp

B♭Cl. 2 pp ppp

B♭Cl. 3 pp ppp

B♭Cl. Alt. pp ppp

B♭Cl. Bar. pp ppp

Ed. Bar. Alt. 1 pp ppp

Ed. Bar. Alt. 2 pp ppp

Ed. Bar. Ten. pp ppp

Ed. Bar. Bar. pp ppp

Ed. Bar. Bar. pp ppp

Horn F. pp ppp

B♭Tpt. 1 pp ppp

B♭Tpt. 2 pp ppp

Tbn. 1 pp ppp

Tbn. 2 pp ppp

B♭Cor. pp ppp

B♭Bass. 1 pp ppp

B♭Bass. 2 pp ppp

Euph. C. pp ppp

Bass C. pp ppp

Ch. Contra. pp ppp

Timb. pp ppp

Perc. pp ppp

01.1536.10

Fl. pp ppp

Ob. pp ppp

Cu. pp ppp

Fg. pp ppp

B♭ptCl. pp ppp

B♭Cl. Solo pp ppp

B♭Cl. 1 pp ppp

B♭Cl. 2 pp ppp

B♭Cl. 3 pp ppp

B♭Cl. Alt. pp ppp

B♭Cl. Bar. pp ppp

Ed. Bar. Alt. 1 pp ppp

Ed. Bar. Alt. 2 pp ppp

Ed. Bar. Ten. pp ppp

Ed. Bar. Bar. pp ppp

Ed. Bar. Bar. pp ppp

Horn F. pp ppp

B♭Tpt. 1 pp ppp

B♭Tpt. 2 pp ppp

Tbn. 1 pp ppp

Tbn. 2 pp ppp

B♭Cor. pp ppp

B♭Bass. 1 pp ppp

B♭Bass. 2 pp ppp

Euph. C. pp ppp

Bass C. pp ppp

Ch. Contra. pp ppp

Timb. pp ppp

Perc. pp ppp

01.1536.10